



Proceedings of

International Conference on Science and Sustainable Development (ICSSD)

“The Role of Science in Novel Research and Advances in Technology”

Center for Research, Innovation and Discovery, Covenant University, Nigeria

June 20-22, 2017

Research Article

Study of Ionospheric Amplitude Scintillation during Geomagnetic Activities of 2012 at Low Latitude Region

G.A. Àlàgbé¹, O.O. Afolabi¹, T.A. Adagunodo^{2,*}, A.B. Rabiú³, S.A. Akinwumi², T.V. Omotosho²

¹Department of Pure and Applied Physics, Ladoké Akintola University of Technology, Ogbomoso, Nigeria

²Department of Physics, Covenant University, Ota, Ogun State, Nigeria

³Centre for Atmospheric Research, National Space Research and Development Agency, Anyigba, Nigeria

*Corresponding author: oladayo.afolabi@yahoo.com, taadagunodo@gmail.com

Abstract. The impact of scintillation on radio communications, geodesy, radar system and navigation cannot be underemphasized. The first evident effect of space weather in the phase of radio signals and amplitude that passes over ionosphere is fluctuations. If there are intense fluctuations in the quality of the signals received, such signals might degrade or attenuate in quality. This phenomenon is referred to as scintillations. To study the effects of magnetic activity on scintillations, the percentage occurrence of scintillations has been separated for the five international quiet (Q) days and five international disturbed (D) days over Ilorin for the year 2012 which was obtained from world data centre Kyoto. The occurrences of S₄ were recorded during quiet days than the disturbed days in the study area. Generally, occurrence of S₄ was enhanced during pre-midnight hours but was suppressed during post-midnight hour both at quiet and disturbed days in Ilorin, Kwara State, Nigeria.

Keywords. Geomagnetic activities; Pre-midnight; Post-midnight; Scintillations' occurrence; Low latitude; Ionosphere

MSC. 82D40

Received: June 13, 2017

Revised: June 30, 2017

Accepted: July 5, 2017

1. Introduction

Occasionally, if radio signal propagates through a disturbed ionosphere, the signal received would fluctuate in phase and amplitude that are inconsistent with the modulation or signal strength from the source. This fluctuation in radio signal is referred to as scintillation. Aquino *et al.* (2005) stated that ionospheric scintillation tends to affect global navigation satellite system's receivers diversely. It ranges from degradation of signal's accuracy to signal loss. So far ionospheric scintillation causes significant communication hazard on radio systems, it is however needs attention from scientists (Banerjee *et al.*, 1992).

Li *et al.* (2010) stated that ionospheric scintillation is likely to disturb auroral and equatorial regions. At low latitude where Ilorin, Nigeria is inclusive, scintillation is majorly controlled by irregularities increment over the equator. Li *et al.* (2007) and (2010) further stated that ionospheric irregularities and scintillations usually occur in the pre-midnight period in most low latitude regions. In this paper, effect of geomagnetic activity on the occurrence of ionospheric amplitude scintillations (S_4) during the ascending phase solar cycle 24 in the year 2012 over Ilorin (a low latitude zone) in Nigeria is analyzed.

The S_4 index indicates the amount of variation in the amplitude of received signal power over an interval of time, typically one minute (Dyrud *et al.*, 2008). The dimensionless index is estimated using Equation (1).

$$S_4 = \sqrt{\left[\frac{\langle I^2 \rangle - \langle I \rangle^2}{\langle I \rangle^2} \right]}. \quad (1)$$

Where I is the signal intensity, and $\langle I \rangle$ is the mean intensity.

2. Materials and Methods

The data used in this study were obtained from the *Global Positioning System (GPS) Scintillation / Total Electron Content (TEC)* monitoring equipment installed at the department of Physics University of Ilorin, Ilorin, Nigeria (Geo Lat: 8.48° N, Long: 4.67° E, Geomagnetic Lat: 1.2° S) (Figure 1) through the Low Latitude Ionospheric Sensor Network (LISN) database for the year 2012. The Five international quiet days and disturbed days were got from the World Data Centre (WDC), Kuyoto, Japan.

The magnetic disturbed and quiet days of each month were calculated from the Global Magnetic Storm index (Kp index) based on the three criteria stated by Johnston *et al.* (1943): “the sum of the eight Kp values; the sum of the square of the eight Kp values; and the maximum of the eight Kp values”. In reference to each of these criteria, a relative order number is given to each day of the month, the mean of the three order numbers are calculated and the days with the lowest and the highest mean order numbers are selected as the five quietest and the five most disturbed days. It should be noted that these selection criteria give only a relative indication of the character of the selected days with respect to the other days of the same

month. As the general disturbance level may be quite different for different years and also for different months of the same year, the selected quietest days of a month may sometimes be rather disturbed or vice versa. The Ap index value is also obtained from WDC. The Ap index measures the daily average level of geomagnetic activity. The Ap-index is thus a geomagnetic activity index where days with high levels of geomagnetic activity have a higher daily value.

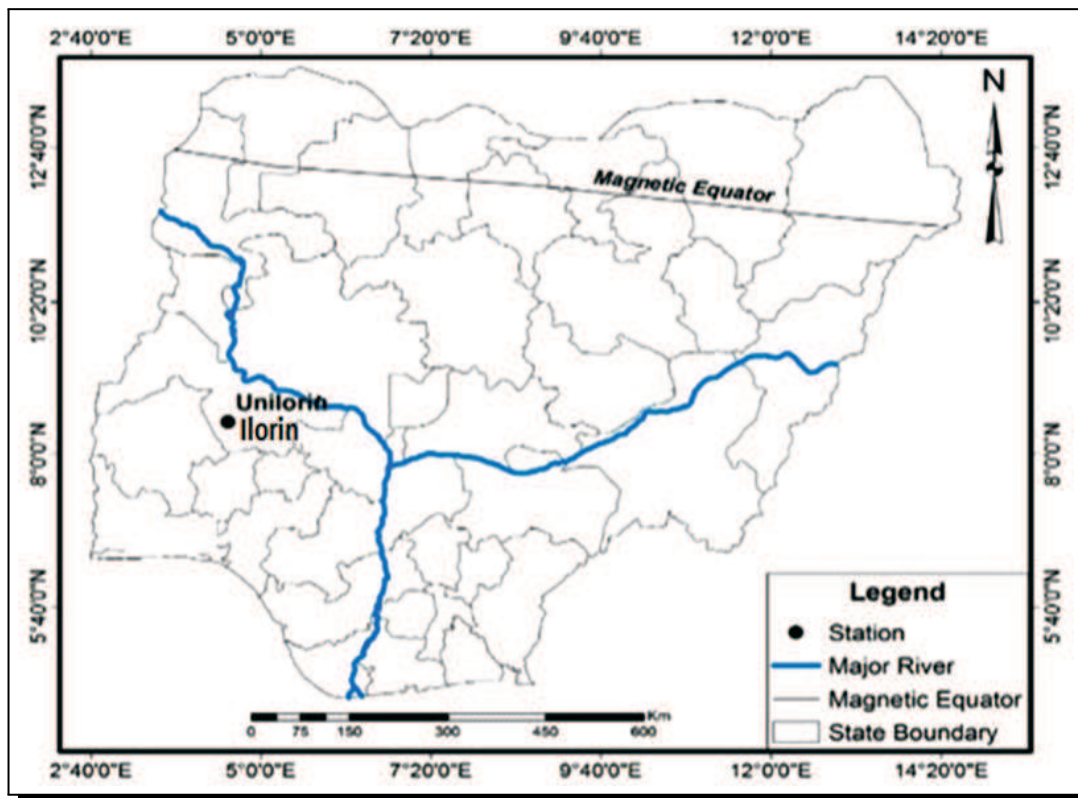


Figure 1. Location of the LISN GPS receiver in Ilorin, Nigeria

3. Results and Discussion

The occurrence of scintillations in the months of April and September in the year 2012 are shown in the Figure 2. In April scintillations, the amplitude of S_4 was suppressed at the post-midnight hour while it was enhanced during pre-midnight hours. The results correlate with that of Tiwari *et al.* (2013). During the quiet period the trend reverses. That is, there are more S_4 during magnetic Quiet days than magnetic disturbed days. It was further revealed that the occurrence of S_4 was enhanced during pre-midnight hours and suppressed during post-midnight hours for magnetic quiet and disturbed period.

Around Equinox, the occurrence of S_4 was enhanced at the pre-midnight hours on the quiet days than the disturbed days but these occurrences were suppressed during post-midnight in the study area. The suppression and enhancement of the asymmetries during geomagnetic perturbations can be traced to variations in the ring current (Aarons, 1991).

During the pre-sunset period, the eastward electric field is increased, causing F-layer height to increase. A negative drive of ring current during this period would lower the local eastward electric field and reduce the F-height. The result may sometimes be too large enough to reverse the rising movement of F-layer during the post-sunset period, thereby inhibiting the creation of irregularities. This may cause suppression of pre-midnight scintillations over most longitude during periods of high magnetic activity (Tiwari *et al.*, 2013).

At pre-midnight and the post-midnight period when the electric field is eastward and the F-layer height is falling, the ring current may create a short-lived eastward electric field. Due to this, scintillations may continue to come into view at some other longitudes. For this reason, the F-layer height may rise temporarily before it falls again. Such a situation may create asymmetries and this might be the cause of scintillations during pre-midnight and post-midnight periods (Tiwari *et al.*, 2013).

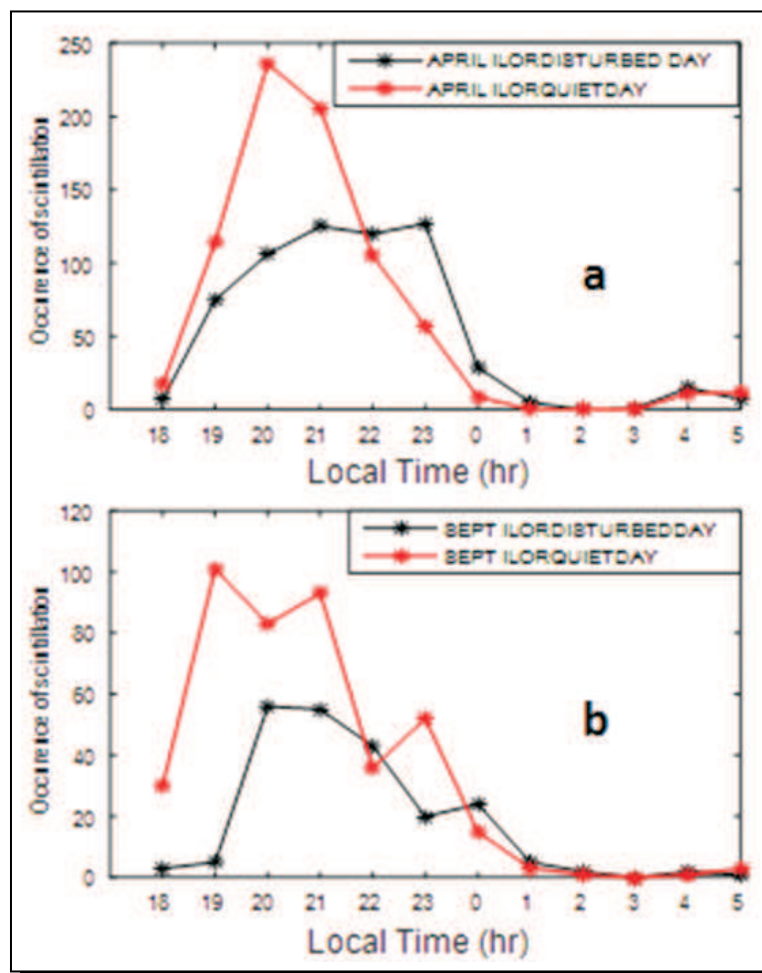


Figure 2. Occurrence of Scintillations over Ilorin in the year 2012 for (a) quiet and disturbed nights in April and (b) September

A_p values measures global level of magnetic disturbance. Figure 3 shows the plot of A_p values against the amplitude scintillation index (S_4) observed at Ilorin, Nigeria during the year

2012. It is clear that the occurrence of S_4 was mainly confined to periods of lower A_p values, and for periods with higher A_p group 8–9 (corresponding to values 47–150), there are nearly no S_4 occurrences. The results showed that scintillation may easily occur during geomagnetic quiet days at Ilorin and geomagnetic disturbance may not trigger the S_4 occurrence. This result is in agreement with the result got by Shewta *et al.* (2012).

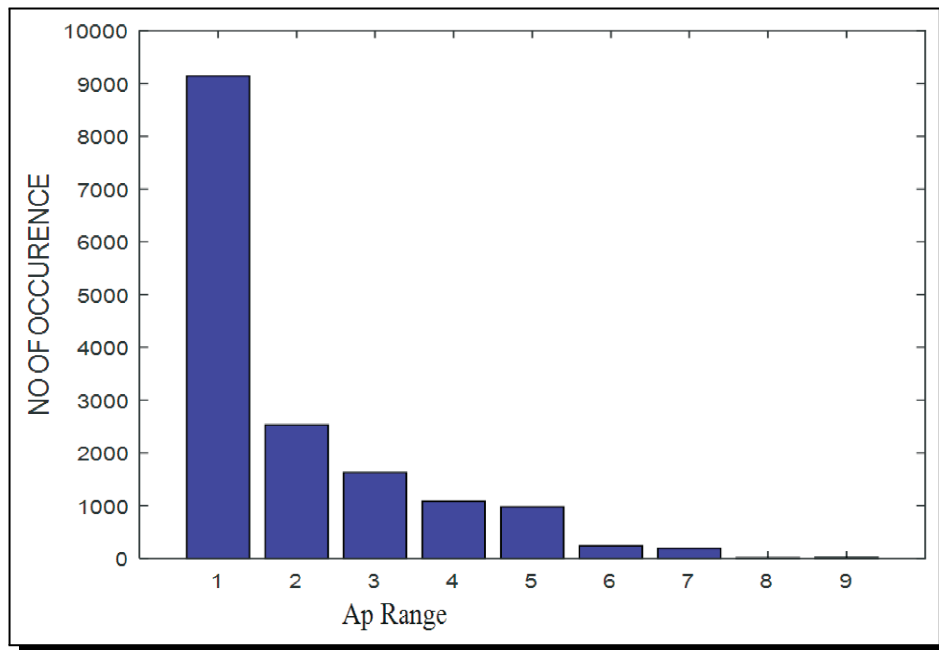


Figure 3. The percentage of occurrence of scintillation with A_p range over Ilorin in 2012

4. Conclusion

It has been inferred from this study that:

- (i) Pre-midnight amplitude scintillations events were localized within the hours of 19:00 – 22:00 local time in Ilorin.
- (ii) The S_4 occurrence was mainly confined to periods of lower A_p values, and for periods with higher A_p values (47–150), there are nearly no S_4 occurrences. Increase in geomagnetic activity inhibits the Occurrence of S_4 .
- (iii) Occurrence of S_4 was enhanced in both disturbed and quiet days during pre-midnight night hours and it was suppressed in the post-midnight night hours. Although there were more occurrence of S_4 during quiet days than disturbed days.

Acknowledgment

The partial support received from Covenant University, Ota, Ogun State, Nigeria on this study is highly appreciated. The authors are also grateful to the ‘world data centre, Kyoto’ for releasing the data used for this study.

Competing Interests

The authors declare that they have no competing interests.

Authors' Contributions

All the authors contributed significantly in writing this article. The authors read and approved the final manuscript.

References

- [1] J. Aarons, The role of the ring current in the generation and inhibition of equatorial F-layer irregularities during magnetic storma, *Radio Sci.* **26** (1991), 1131 – 1149.
- [2] M. Aquino, T. Moore, A. Dodson, S. Waugh, J. Souter, F.S. Rodrigues, Implications of ionospheric scintillation for GNSS users in Northern Europe, *J. Navig.* **58** (2005), 241 – 256.
- [3] P.K. Banerjee, R.S. Dabas and B.M. Reddy, C and L band transionospheric scintillation experiment: some results for applications to satellite radio systems, *Radio Sci.* **27** (6) (1992), 955 – 969.
- [4] H.F. Johnston, Mean k -indices from twenty one magnetic observatories and five quiet and five disturbed days for 1942, *Terr. Magn. Atmos. Elec.* **47** (1943), 219, doi:10.1029/TE048i004p00219.
- [5] D. Lars, J. Aleksandar, B. Andrew, W. Derek and G. Suman, Ionospheric Measurement with GPS: Receiver Techniques and *Methods. Radio Science* **43** (2008) (RS6002), 1 – 11.
- [6] G. Li, B. Ning, L. Liu, Z. Ren, J. Lei and S.Y. Su, The correlation of longitudinal/seasonal variations of evening equatorial pre-reversal drift and of plasma bubbles, *Ann. Geophys.* **25** (2007), 2571 – 2578.
- [7] G. Li, B. Ning, Z. Ren and L. Hu, Statistics of GPS ionospheric scintillation and irregularities over polar regions at solar minimum, *GPS Solut.* **14** (2010), 331 – 341, doi:10.1007/s10291-009-0156-x.
- [8] S. Mukherjee, S. Sarkar, P.K. Purohit and A.K. Gwal, Study of GPS ionospheric scintillations over equatorial anomaly station Bhopal, *International Journal of Advances in Earth Sciences* **1** (2012), 39 – 48.
- [9] S. Tiwari, S. Sarkar, A. Vishwakarma and A.K. Gwal, Effect of magnetic activity on scintillation at equatorial region during low solar activity, *Advances in Physics Theories and Applications* **19** (2013), 122 – 129.